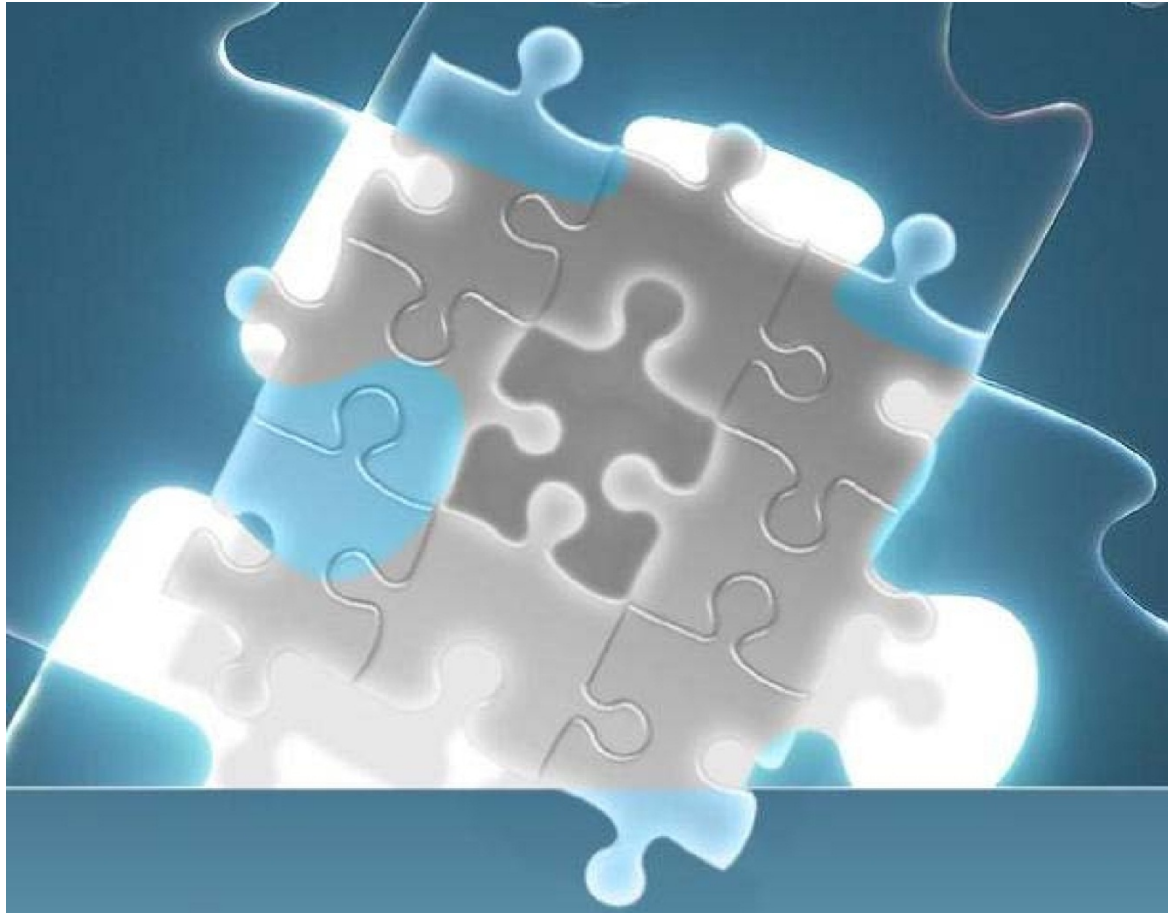


Application Note



License Asset Manager Backups in Linux



This application note will guide you through the process of backing up the License Asset Manager database under the Linux environment. Furthermore the appnote also details how to restore a backup of the database back into LAM.

Abstract:

This application note will guide you through the process of backing up the License Asset Manager database under the Linux environment. Furthermore the appnote also details how to restore a backup of the database back into LAM.

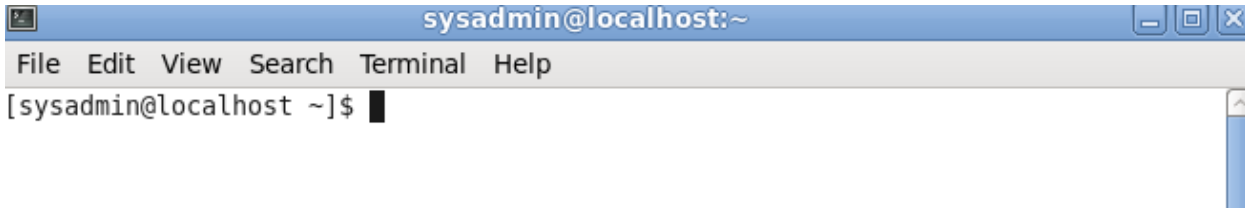
What You Will Need:

- This application notes assume you have functioning installation of the License Asset Manager (LAM) system which **may or may not** include the License Monitoring (LM) component.
- You will need the basic administrative rights over the system to execute the tasks that are necessary to complete the process. Rights should include creating, modifying, and deleting files/folders.

Backing Up the LAM DB:

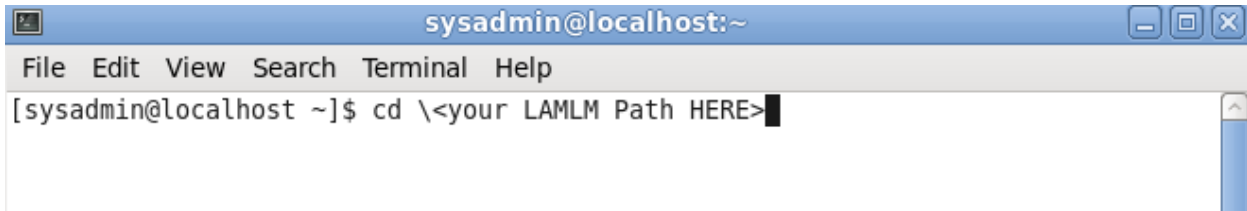
The process of backing up your MySQL Database in Linux is simple. **Follow the steps below, note you must leave the LAMLM system running but be sure no one is attempting to use the system; or especially attempting to save new data to it!**

1. Open up an instance of "Terminal" if you are using a GUI based distribution; if you are not simply use the console prompt.



(Screenshot of Open Terminal)

Now 'cd' into your LAMLM installation directory.



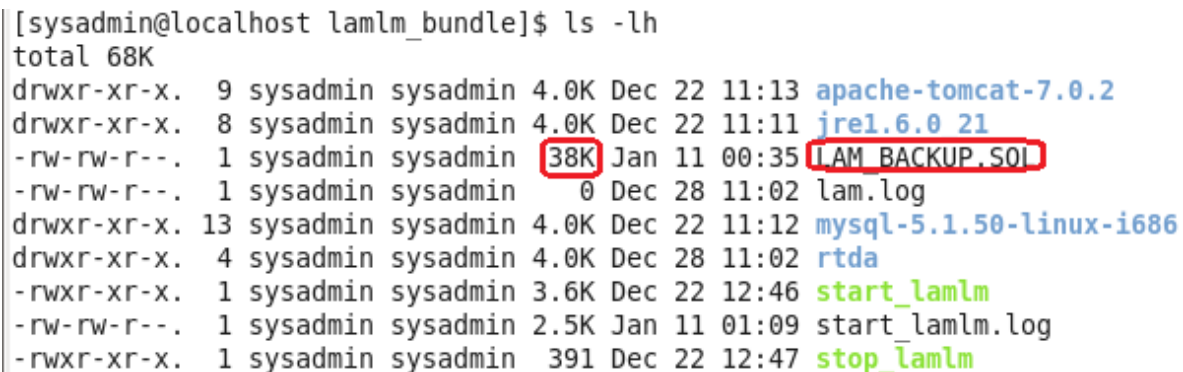
(Screenshot of CD LAMLM Command)

2. Type in './MySQLx.x.xx-linux-xxxx/bin/mysqldump -ulamuser -plampassword lamdb > /<Choose_A_PATH>/LAM_BACKUP.SQL'. Note you may input any path you like to save the backup file; just be sure to put it somewhere you will remember!



(Screenshot of './mysqldump' Command in Terminal Window)

3. When complete, you should get the shell prompt back (\$). Do a 'ls -lh' of the directory containing the LAM_BACKUP.SQL file to be sure it was created.



(Screenshot of 'ls -lh' command in Terminal Window)

*****Important Note: The LAM DB cannot be read or updated when the 'mysqldump' command executes. Automatic locks are placed on the database to prevent possible corruption!*****

Restoring the LAM DB:

We are now ready to restore our LAM database backup that we created previously. Open a terminal prompt and perform the following:

```
Type 1. in ./MySQLx.x.xx-linux-i686/bin/mysql.exe
uroot' You should see a new prompt that says 'mysql'
sysadmin@localhost lamlm_bundle]$ ./mysql-5.1.50-linux-i686/bin/mysql -uroot
welcome to the MySQL monitor.  Commands end with ; or \g.
Your MySQL connection id is 3
Server version: 5.1.50 MySQL Community Server (GPL)

Copyright (c) 2000, 2010, Oracle and/or its affiliates. All rights reserved.
This software comes with ABSOLUTELY NO WARRANTY. This is free software,
and you are welcome to modify and redistribute it under the GPL v2 license

Type 'help;' or '\h' for help. Type '\c' to clear the current input statement.

mysql> █
```

(Screenshot of MySQL "root" Login)

2. At the mysql > prompt type in "DROP DATABASE lamdb;" This will remove the old database.

```
mysql> drop database lamdb;
Query OK, 24 rows affected (1.36 sec)
```

```
mysql> █
```

(Screenshot of MySQL "drop database" Command)

3. At the mysql > prompt type in "CREATE DATABASE lamdb;" This will create the database for import of data.

```
mysql> create database lamdb;
Query OK, 1 row affected (0.04 sec)
```

(Screenshot of MySQL "create database" Command)

4. At the mysql > prompt type in "use lamdb;"

```
mysql> use lamdb;
Database changed
```

(Screenshot of MySQL "use lamdb" Command)

5. At the mysql > prompt type in "\. /path/to/LAM_BACKUP.SQL where you must put the path to the 'LAM_BACKUP.SQL' file. An example command is below:

```
mysql> \. /home/sysadmin/lamlm_bundle/LAM_BACKUP.sql
```

(Screenshot of Example Backup Path)

6. Type in 'exit'

For Technical Support call TeamEDA Inc. at 978-251-7510 or email support@teameda.com