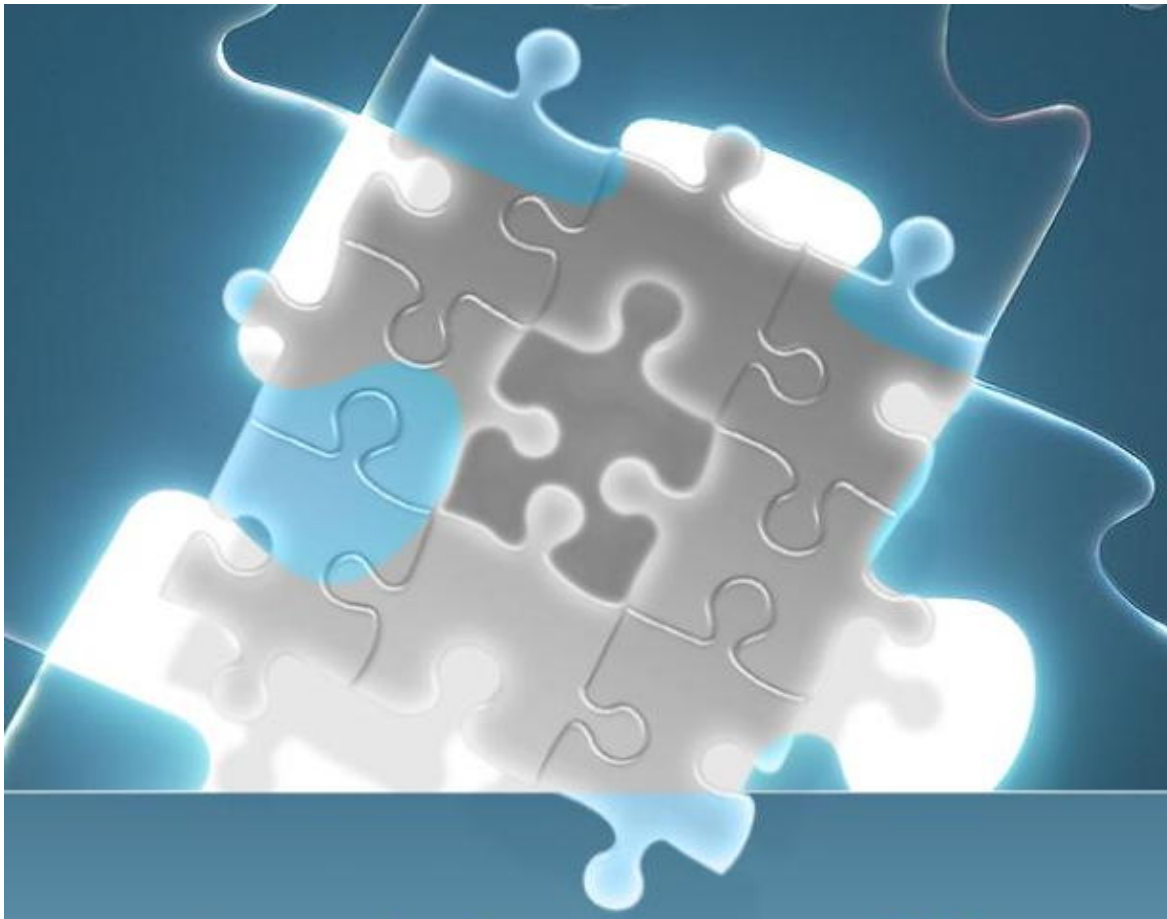


Application Note

Installing your Logo in LAM



In LAM you have the option to customize the GUI and Reports by installing your company logo. With you logo installed the tool appears more like a customized Company tool. We give you this ability. This App Note describes the process for sizing and installing your logo, so it looks like “your” tool. We highly recommend inserting your logo.

The first thing you'll need to do is select a picture that reflects your company's brand (logo). Often times a logo file can be found on company intranet sites, or on your company's public website. If using the Company website, just point, right click, "Save Picture As". Choose .gif or .bmp, but this will have to be converted to .jpg. This image should be the right size, about 80 pixels in width and 500 pixels in length.

If it is not in .jpg, open it in MSPaint on Windows (or a similar program elsewhere) and then click "File" and then "Save As..." From the dropdown menu at the bottom select the "JPEG" option, and then put for the file name "logo.jpg." It must be a lower case .jpg extension (upper case will not work!).

Installing Your Logo File

Installing the logo file in LAMLM is easy. In the LAMLM directory there is a folder on Windows called "Tomcat 5.5" and on Linux there is a directory called apache-tomcat-*. In either, open this folder. Inside you'll see the "webapps" folder and inside that folder you'll see the "lam" folder. You'll see a file called "logo.jpg". In order to have your logo appear all you have to do is overwrite the existing logo file with the logo.jpg you created. Refresh or restart LAM and your logo will appear!

If your logo file is too large or too small for LAM, it will cover some of the GUI and be out of proportion. So in order to avoid this we ask that you resize your logo file if necessary.

Resizing Your Logo File

In order to resize your logo file you need something like MSPaint on Windows or similar. Most photo editing utilities allow you to resize images with ease. I will use MSPaint as an example. If you open MSPaint (Start -> Run -> mspaint) you'll be able to open your logo with the File -> Open menu item. Select your logo.

Now go to the "Image" menu and select the "Stretch/Skew" menu item. This pulls up a dialog box with a section called "Stretch" with 100% in each. Here you can specify by what percentage you want to shrink the image by selecting a percentage smaller than 100%. For example, to reduce the image by 25%, you'd put 75% into the width and height boxes.

When your image is the desired size, please save it and now we'll look into how to install the logo file. To save your file click "File" and then "Save As..." From the dropdown menu at the bottom select the "JPEG" option, and then put for the file name "logo.jpg."

Reinstall the new logo.jpg using the procedure above.

referenced herein are either trademarks or registered trademarks of TeamEDA or its affiliates. All other trademarks are the property of their respective owners.

TeamEDA | 51 Middlesex Street, Suite 104 | North Chelmsford | MA | 01863 | www.teameda.com | (+1) 978.251.7510