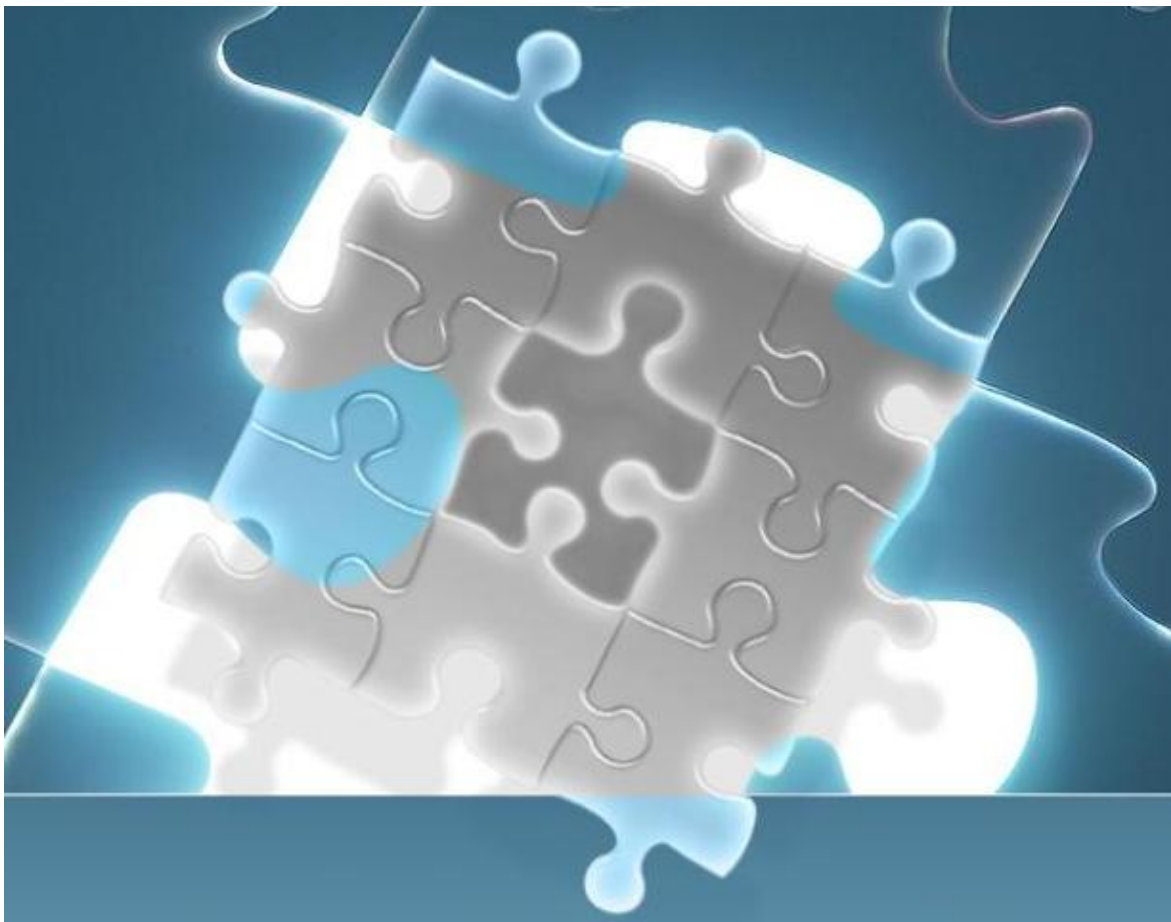




Application Note

Upgrading LAM (using LAM or LAMLM software)

Windows



Preface:

This document outlines the steps to take in order to upgrade your Windows LAM from its current version to our newest release.

Steps to take:

1.) First, we will backup your data as a security precaution. The data should be preserved when we do the upgrade. In case something goes wrong, we have this backup.

The first thing you will need to do is to run the stop_lam or stop_lamlm script from the LAM home directory. For those people who did their original installation using our Windows Installer, LAM or LAMLM would be the name of the default LAM home directory. For those of you who did not use the Windows Installer script to install LAM, your LAM home directory may have a more unique name that you have given it.

Next, follow the steps below:

Note: The first line of each command is a general purpose command line, and you will substitute your known directory for the italicized path. Underneath each command, I have included a command line that uses the actual names for the directories, usernames and passwords. These are the values normally set up by default, if you have installed using our Windows Installer script.

- a. Click Start and then Run. Type in "cmd" in the box and hit enter. A command prompt window should appear.
- b. Type in '*cd lam_home_directory*'
Default: 'cd LAMLM'
- c. Type in '*start mysql_home_directory\bin\mysqld.exe --standalone*'.
Default: 'start MySQL5\bin\mysqld.exe --standalone'
This will run the MySQL server for the backup procedure.
- d. Type in '*mysql_home_directory\bin\mysqldump.exe -uuser -ppassword lamdb > LAM_BACKUP.SQL*'
Default: MySQL5\bin\mysqldump.exe -ulamuser -plampassword lamdb > LAM_BACKUP.SQL'.
Note: lamuser and lampassword are the actual passwords here. They are the default username and password set for the lamdb If you are unsure if your username and password are set to these defaults, please check it in this file:
tomcat_home_directory\webapps\lam\WEBINF\classes\properties\database.properties. You will see the username and password values for LAM set there.
e.g. username=lamuser
 password=lampassword
- e. When complete, you should get the prompt back, and you should see a LAM_BACKUP.SQL file in your directory.
- f. Type in '*mysql_home_directory\bin\mysqladmin.exe -uroot -ppassword shutdown*'
Default: 'MySQL5\bin\mysqladmin.exe -uroot -pteam7eda shutdown'
Note: root and pteam7eda are the actual passwords here
Note: If you can't get this command to work, it is ok to do a stop_lam or stop_lamlm instead.

2.) Backup the old lam directory and remove old lam.war file.

Go to Explorer. Find your *Tomcat_home_directory\webapps\lam* directory

By default: tomcat5.5\webapps\lam

Rename it to *Tomcat_home_directory\webapps\lam.old*.

a. Remove any old lam.war file from *Tomcat_home_directory\webapps*

3.) Now you will need the new LAM upgrade file. If you haven't received the download instructions in an email, then you should email us at support@teamedata.com for the download instructions.

You will also need a username and password to download this file, which we will normally include in our email to you. If we haven't provided you with this information, please contact us at support@teamedata.com. Save the downloaded lam.war file in the `Tomcat_home_directory\webapps` directory.

4.) Now go back to your LAM home directory in a command window. Run `start_lam` or `start_lamlm`. On the first time up, LAM will perform some tasks in the background when Tomcat starts. It will unpack the lam.war, and create a new lam directory. It may take longer than usual to start up the first time. After logging in to LAM, check to make sure all your LAM data is still present. If you use LAM/LM, please do steps 6-9 below to finish the installation.

5.) **Note:** If you get a message that "database cannot be found" when you try to log in to LAM, it could mean that the database.properties file has incorrect values. You should check your old database.properties file, and make sure the values match the values in your new database.properties file. Check `tomcat_home_directory\webapps\lam.old\WEB-INF\classes\properties\database.properties`, and compare to `tomcat_home_directory\webapps\lam\WEB-INF\classes\properties\database.properties` file. Copy in any changes from your old database.properties file to your new `tomcat_home_directory\webapps\lam\WEB-INF\classes\properties\database.properties` file.

[The remaining steps are only necessary if you are using LAM and LM. If you only use LAM, you should be done with the install.](#)

ADDENDUM FOR LAM/LM users

6) Run `stop_lamlm` to exit your upgraded LAM/LM. You will need to copy and paste settings data from your original lam.properties file into the new lam.properties file. The customized values set in the original lam.properties need to be retained, but, you don't want to overwrite the access to the new features contained in the newest release lam.properties file.

Please Note: The `lm_available` is set to false by default, when you do the upgrade. You will want to change this to `lm_available=true`.

You should check both files to make sure there are no customized values that you need to copy over to the new lam.properties.

Look to see if the lines **prior to this line in the new lam.properties** match in both files:

```
#####  
# PROPERTIES FOR LM READ.
```

If they don't match, you need to do a copy and paste to update the new lam.properties file.

7.) The easiest way to do this is to edit the new lam.properties file, delete the top section, all the way to the "#####" line that runs across the page. Then you will copy your settings data from the original lam.properties file, and paste it into the top of the new lam.properties file. See below for a detailed example:


```

## Toggle LM <true| false>
lm_available=true
lm_debug=false
lm_vovlmd=../licmon/licmon.swd/vovlmd
lm_config=config_lam.tcl

lm_scripts=../rtda/common/scripts
server_info_file=serverinfo
daemon_info_file=daemoninfo
feature_info_file=featureinfo

#lm_scripts=/lamview/LMShell
#server_info_file=serverinfo.bat
#daemon_info_file=daemoninfo.bat
#feature_info_file=featureinfo.bat
#####
PROPERTIES FOR LM READ.
#
# NOTES: DEFAULT URL FOR LM FEATURES AND DAEMONS USED BY LAM IS GIVEN BELOW. TO CHANGE THE
#
# URL FOR ANY OF THEM, UNCOMMENT THE CORRESPONDING LINE AND SPECIFY NEW URL.
#
#####
#features_url=http://localhost:8182/raw/features/
#daemons_url=http://localhost:8182/raw/daemons/
#####
# LOG FILE PATH USED BY LAM TO WRITE LOG WHILE READ LM DATA AND LICENSE FILE/AUTOMATICALLY
# NOTES: USER CAN CHANGE THE PATH TO POINT THE EXACT LOCATION OF THE LOG FILE, OTHERWISE,
LAM
# WILL USE THE DEFAULT PATH (lam_auto_license_read.log). REMEMBER, USER DEFINED PATH SHOULD
# NOT POINT INSIDE THE LAM INSTALLATION DIRECTORY.
#####
#log file used by LAM.
#lam_auto_license_log_file=lam_auto_license_read.log
#lam_auto_license_debug=true

```

10.) Run start_lamlm to bring up LAM/LM. Make sure your LAM/LM integration is working properly. For example, check that you are able to see utilization stats on those features you could see utilization stats on before. Also make sure that under the LAM servers tab, you have a button to "Import servers/daemons/features from LM"

Troubleshooting

If anything goes wrong during the upgrade, and you your data doesn't appear or looks corrupt you can always restore the backed up data with the backed up LAM_BACKUP.SQL file. For a how-to on restoring data, please email us at support@teameda.com and ask us for our Application Note LAM_DATABASE_BACKUP. You may also need help from us to restore the database. For Technical Support call TeamEDA at 978-251-7510 or email support@teameda.com