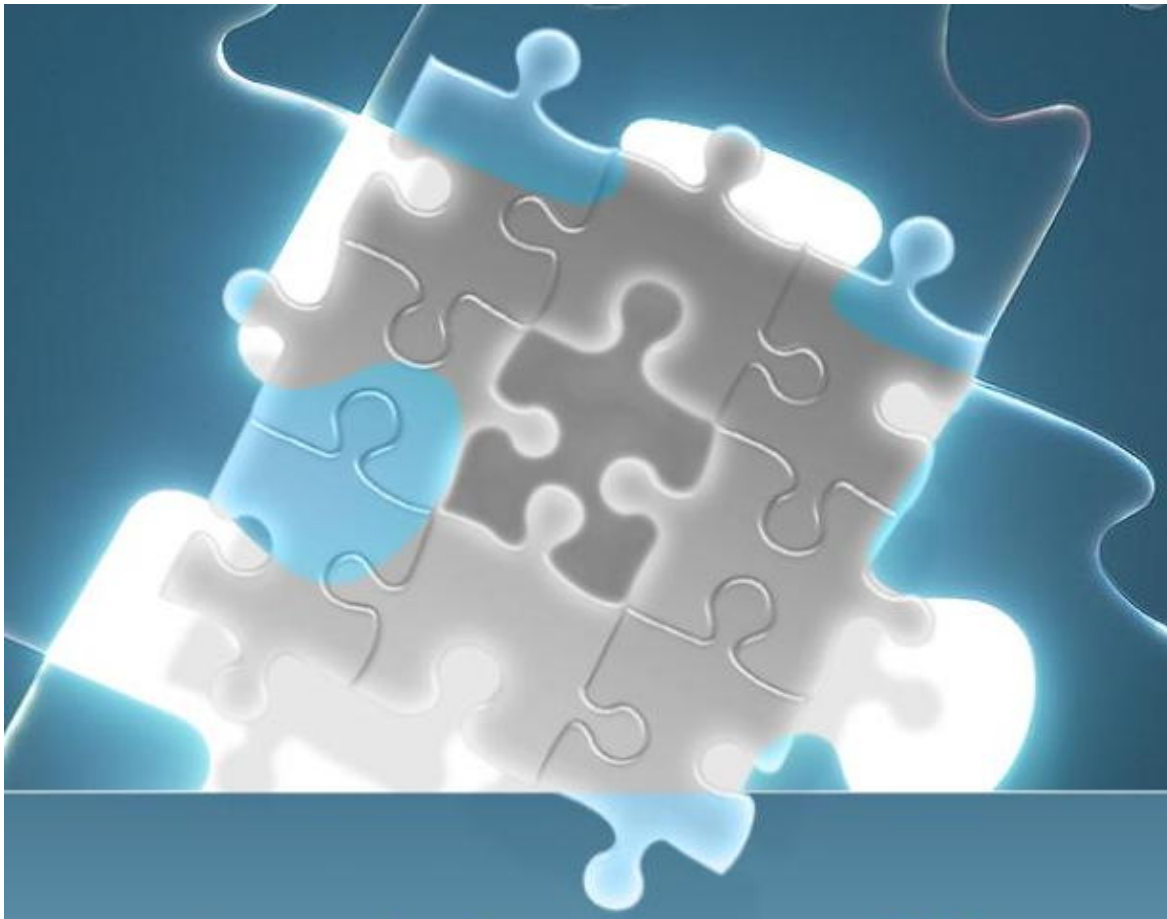


## Application Note

### The lam.properties File



In LAMLM there is a file that configures some aspects of the LAM software called *lam.properties*. This file allows you to enable debugging, enable or disable LM, and configure where scripts for certain functionality will be called.

The lam.properties file is located in your lamIm installation directory. Starting from the lamIm directory it is in:

Linux: apache-tomcat-5.5.23/webapps/lam/WEB-INF/classes/properties/  
Windows: Tomcat55\webapps\lam\WEB-INF\classes\properties\

Below is a sample lam.properties file. This is what you'll see by default. I'll explain what each line means further afterwards.

```
#####  
#####  
# LAM PROPERTIES FILE # #  
# #  
#####  
#####  
  
#Toggle LM <true| false>  
lm_available=false  
lm_debug=false  
lm_vovlmd=../.././licmon/licmon.swd/vovlmd  
lm_config=config_lam.tcl  
  
#lm_scripts=../.././rtda/common/scripts  
#server_info_file=serverinfo  
#daemon_info_file=daemoninfo  
#feature_info_file=featureinfo  
  
#####  
#####  
# PROPERTIES FOR LM READ. #  
# NOTE: DEFAULT URL FOR LM FEATURES AND DAEMONS USED BY LAM IS GIVEN  
#BELLOW. TO CHANGE THE  
# URL FOR ANY OF THEM, UNCOMMENT THE CORRESPONDING LINE AND SPECIFY  
THE  
#NEW URL  
  
#####  
#####  
#features_url=http://localhost:8182/raw/features/  
#daemons_url=http://localhost:8182/raw/daemons/  
  
#####  
#####  
# LOG FILE PATH USED BY LAM TO WRITE LOG WHILE READ LM DATA AND LICENSE  
#FILE AUTOMATICALLY  
# NOTE: USER CAN CHANGE THE PATH TO POINT THE EXACT LOCATION OF THE LOG  
#FILE, OTHERWISE, LAM  
# WILL USE THE DEFAULT PATH (lam_auto_license_read.log). REMEMBER, USER  
#DEFINED PATH SHOULD
```

```
# NOT POINT INSIDE THE LAM INSTALLATION DIRECTORY
```

```
#####  
#####
```

```
#log file used by LAM.
```

```
#lam_auto_license_log_file=lam_auto_license_read.log
```

```
#lam_auto_license_debug=true
```

## Explanation:

**lm\_available** – This can either be true or false. This toggles whether LM is available for LAM.

**lm\_debug** – This can either be true or false. This toggles whether scripts should output debugging data into the LAM interface.

**lm\_vovlmd** – This variable points to a directory that contains LM's vovlmd directory. This is where the file is located that LM reads to know what servers/daemons to monitor.

**lm\_config** – This variable allows you to name the file. It is best kept default.

**lm\_scripts** – This variable points to the directory where the LM scripts are available. The values are typically:

Linux: ../../../../rtda/common/scripts

Windows: ../../../../rtda/winNT/bat

**serverinfo\_file**

**daemoninfo\_file**

**featureinfo\_file** - These variables points to the files that execute for LAM to read in certain types of information, described below:

Linux: serverinfo, daemoninfo, featureinfo

Windows: serverinfo.bat, daemoninfo.bat, featureinfo.bat

serverinfo allows LAM to display whether a server is up or down.

daemoninfo allows LAM to display whether a particular daemon is up or down.

featureinfo allows LAM to display a summary of utilization statistics.

**features\_url** – This variable points to the URL where the features page in LM can be found. The default is usually fine. Some special configurations may require a change here.

**daemons\_url** – This variable points to the URL where the daemons page in LM can be found. The default is usually fine. Some special configurations may require a change here.

**lam\_auto\_license\_log\_file** – By default this is commented out and the default location is used in either apache-tomcat\*/temp directory on Linux or the Tomcat55\temp on Windows. This log file allows you to see the latest information from the last auto reread cycle. You can use this variable to make the log file appear in another directory of your choosing.

**Lam\_auto\_license\_debug** – This variable allows you to toggle more information in the auto reread log. Accepted values are either true or false.

© 2008 TeamEDA. All rights reserved. TeamEDA, the TeamEDA logo, License Asset Manager and all marks relating to TeamEDA products and services referenced herein are either trademarks or registered trademarks of TeamEDA or its affiliates. All other trademarks are the property of their respective owners.

TeamEDA | 51 Middlesex Street, Suite 104 | North Chelmsford | MA | 01863 | [www.teameda.com](http://www.teameda.com) | (+1) 978.251.7510