

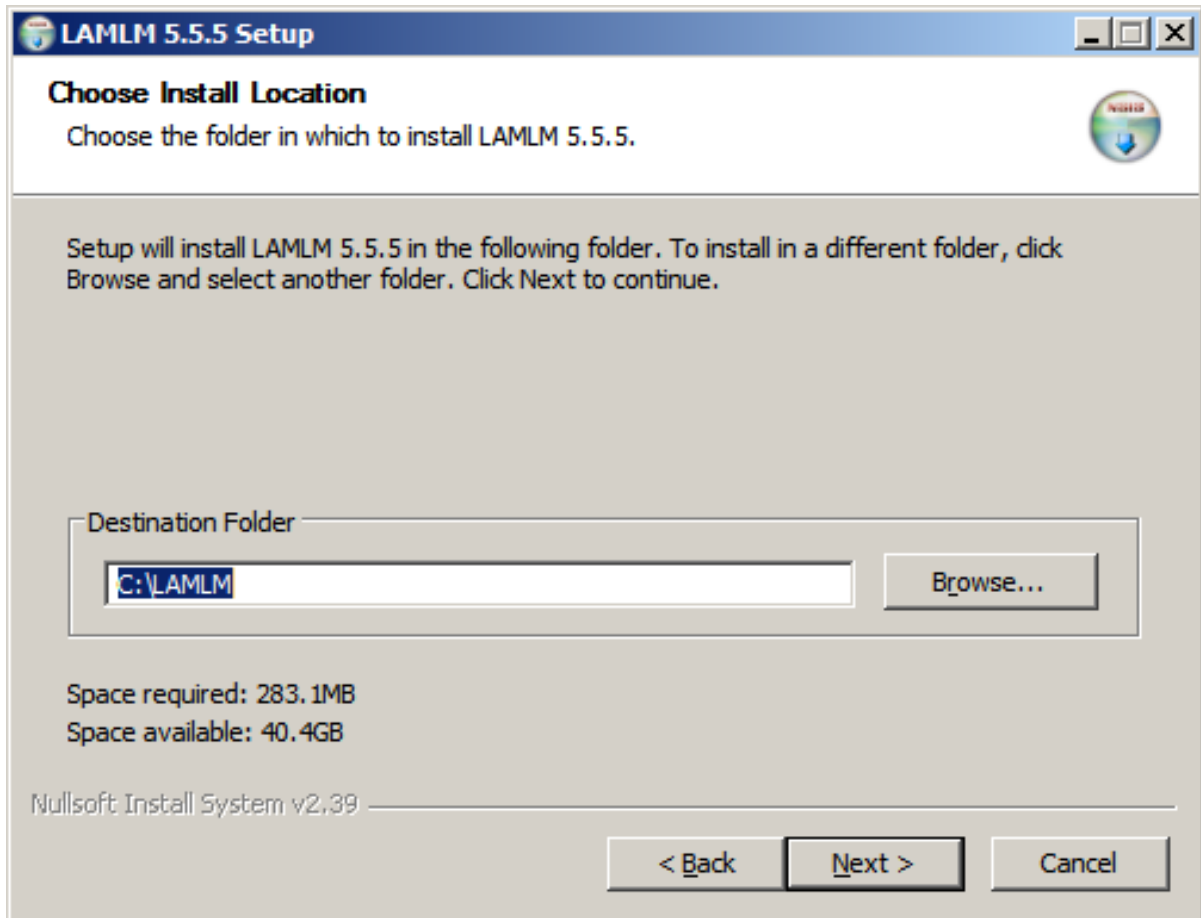
Using the Windows Installer for LAMLM Bundle

Thank you for choosing LAMLM! The following guide will explain each step of the Windows installer for you.

1. This is the Welcome Screen. You simply have to click next to begin the installation process.



2. Here you will choose the destination of your install. We ask that you please keep this default, which should be **C:\LAMLM** for this release. If you do have to change it, please **make sure the path does not contain spaces**. Afterwards, click next.



3. Here you can simply hit next. This will create an uninstall link in your start menu.

4. Now the installer will install the files for you. When complete, click next, and the installer will check for Java. If Java is not detected, the installer will install it for you.

6. You can choose a logo file here. Click the “...” button to select a path to an image file to use in your LAM installation. If you want to manually install a logo later, please check the “*I will install a logo later*” checkbox. Please try and keep the logo small, around 80px by 15px.

7. You are almost done with the install. The next step will install LM.

8. Get LMStat and install it

Download lmutil from the internet:

http://www.globes.com/support/fnp_utilities_download.htm

Download the appropriate 'lmutil.exe' program for your Windows platform, and save it as 'lmstat.exe' under the C:\LAMLM\rtda\winNT\bin\ directory

9. You are done!

You are now finished installing LAM/LM!

Run the C:\LAMLM\start_lamlm.bat to begin LAM/LM! Then point your browser to <http://localhost:8181/lam> and login with the default username and password of **admin/admin**

To login to LM point your browser to <http://localhost:8183/> and login with your Windows username and password.

To shutdown LAM/LM simply run C:\LAMLM\stop_lamlm.bat and enter in your password for MySQL when prompted. Then close the Tomcat window.

10. Some Tips:

a: Keep the Tomcat window opened. If you close it please run the *stop_lamlm.bat* script and rerun the *start_lamlm.bat* script. To install Tomcat as a service so you don't have to worry about the window, see part **c** of the tips section below.

b: If you do not want to enter a MySQL password to shut it down you can install it as a service. To install MySQL as a service do the following from a command window:

```
C:\LAMLM\MySQL5\bin\mysqld.exe --install
```

This will install MySQL as a service that can be started and stopped either via the net command or in the services dialog in Windows.

c: If you want to install Apache Tomcat as a service, you can run the following command from a command window:

```
C:\LAMLM\Tomcat5.5\bin\service.bat install tomcat
```

This will install Tomcat as a service as "tomcat". After this is done the Tomcat service can be started and stopped either via the net command or in the services dialog in Windows.

11. Help!

a: If you don't see Utilization Statistics in your License Details page in LAM this might be because you have not been running LAMLM long enough. It takes up to 24 hours for that information to show up. If you still have problems after two days, please contact TeamEDA.

b: If you don't see green lights for your servers and daemons you might not have put lmstat.exe in the correct place. Please put it in C:\LAMLM\rtda\winNT\bin . If you still don't see green lights for your servers and daemons, please contact TeamEDA.