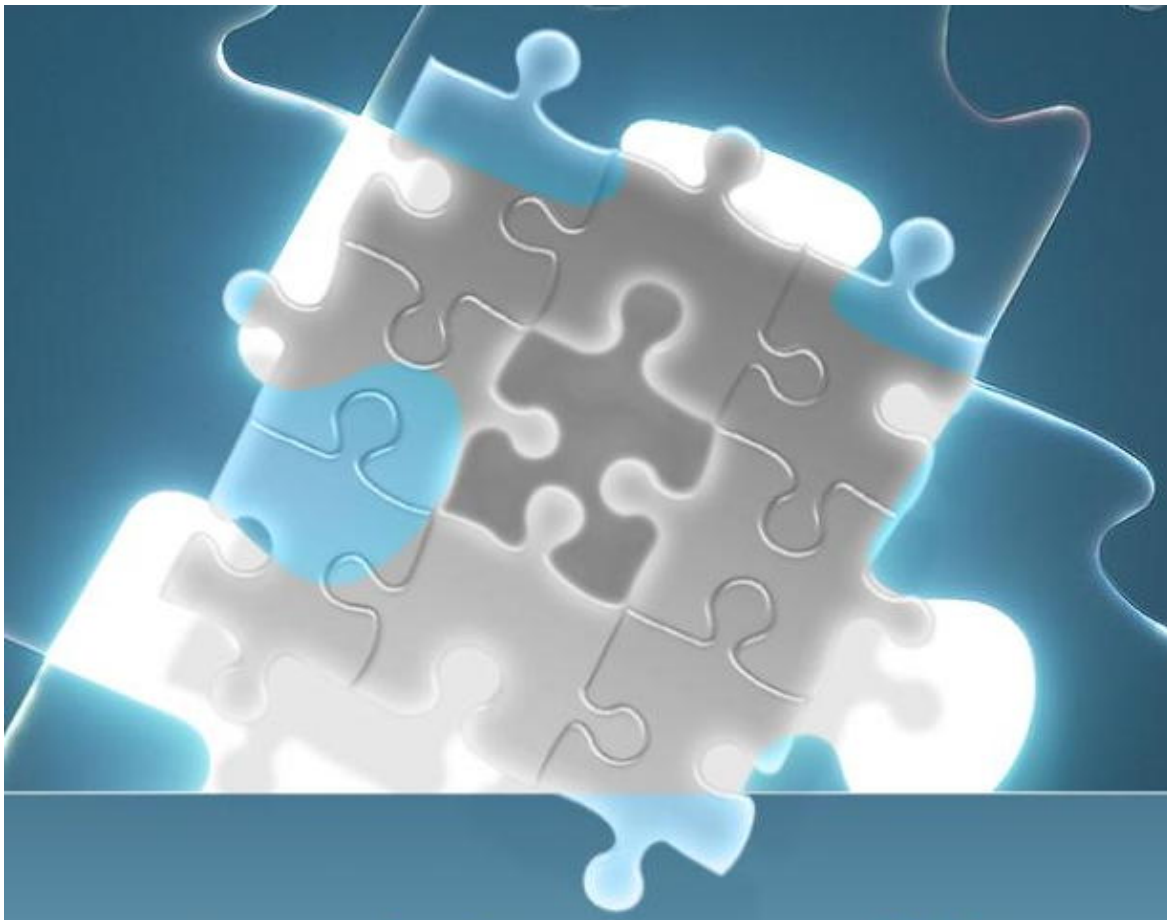


Application Note

Upgrading License Monitor for LAM in Linux



Preface:

This document describes the process to upgrade License Monitor (LM) for LAM when you are in

3

© 2008-2011 TeamEDA Inc.. All rights reserved. TeamEDA, the TeamEDA logo, License Asset Manager and all marks relating to TeamEDA products and services referenced herein are either trademarks or registered trademarks of TeamEDA or it's affiliates. All other trademarks are the property of their respective owners.

TeamEDA Inc. | 51 Middlesex Street, Suite 104 | North Chelmsford | MA | 01863 | www.teameda.com | (+1) 978.251.7510

the Linux environment.

Overview:

First, you will download and extract the necessary LM upgrade files. You will then run the install script, which will create a new lamlm/rtda/YYYY.MM directory and copy data from the old rtda/YYYY.MM directory into it. After the install is complete, check that the upgrade is successful.

Downloading LMupgrade files

Run './stop_lamlm' to bring down your LAMLM.

```
[sysadmin@localhost lamlm_bundle]$ ./stop_lamlm  
Stopping LAM
```

(Screenshot of Stopping LAMLM)

Do a 'ps -ef | grep vov' to make sure no related processes running. For any stale processes use the 'kill -9 <pid>' command. If you see any "vovserver" entries after running this command be sure to kill them first! If you see nothing but an entry for your grep command that is normal.

```
[sysadmin@localhost ~]$ ps -ef | grep vov  
sysadmin 6829      1 0 10:47 pts/0    00:00:01 vovserver -p lam -jsb licmon  
sysadmin 6884      1 0 10:47 pts/0    00:00:05 vovslave -p licmon -h localhost  
-r lmparser -l ./licmon.swd/logs/slaves/parser/log -I - -i 1 -V - -R - -G - -S -  
-a parser -g gl -e - -b FULL -L - -C 0 -D 0 -T 4 -U 60 -n 0 -c 1 -P 0.0 -M 20.0  
-s -j  
sysadmin 6900      1 0 10:47 pts/0    00:00:00 vovsh -f /home/sysadmin/lamlm-pa  
tch/lamlm_bundle/rttda/2010.09/linux/tcl/vtcl/vovresourced.tcl -l licmon  
sysadmin 7045      1 0 10:47 pts/0    00:00:00 vovsh -f /home/sysadmin/lamlm-pa  
tch/lamlm_bundle/rttda/2010.09/linux/tcl/vtcl/vovlmd.tcl  
sysadmin 7151      1 0 10:48 pts/0    00:00:00 vovsh -f /home/sysadmin/lamlm-pa  
tch/lamlm_bundle/rttda/2010.09/linux/tcl/vtcl/vovperiodicd.tcl  
sysadmin 7816    5032 1 11:27 pts/0    00:00:00 grep --color=auto vov  
[sysadmin@localhost ~]$ kill -9 6829  
[sysadmin@localhost ~]$
```

(Screenshot of Stale Process Removal)

In order for us to do the LM upgrade, you will need to download the file LMupgradeYYYYMM.tar using the username and the password sent to you by TeamEDA support. The tar file should be downloaded to a temp directory on your LM server. This tar file will be untarred into an LMupgrade directory.

```
tar -xvf LMupgrade200908.tar
```

```
[sysadmin@localhost Downloads]$ tar -xzf LMupgrade200908.tar
```

(Screenshot of File Extraction)

3

© 2008-2011 TeamEDA Inc.. All rights reserved. TeamEDA, the TeamEDA logo, License Asset Manager and all marks relating to TeamEDA products and services referenced herein are either trademarks or registered trademarks of TeamEDA or it's affiliates. All other trademarks are the property of their respective owners.

TeamEDA Inc. | 51 Middlesex Street, Suite 104 | North Chelmsford | MA | 01863 | www.teameda.com | (+1) 978.251.7510

Backup RTDA directory

Your rtda information will be backed up under the current version number subdirectory (e.g. lamlm/rtda/2009.08). During the upgrade process we will create a new subdirectory for this release of LM. For example, a new directory called 2010.09 standing for the new LM version number. Your old information will remain intact. For example:

< **screenshot of directories at command line** >

```
lamlm_bundle/rtda/2010.06 (old directory) (will serve as the backup of your data)
lamlm_bundle/rtda/2010.09 (new directory) (will be created by the upgrade script below)
```

LM install script

Next, you will be bringing up our GUI-based Install utility. This runs under X-windows. You will need to make sure you have some kind of X-windows software running on your LM server in order to see the GUI. You will need to set your DISPLAY variable properly to be able to see the GUI Install utility. The DISPLAY is set to equal the machine you are sitting at. Please see your systems administrator if you need help on this step.

Next, go back to your LMupgrade directory that you have untarred, and run the install script.

```
cd LMupgrade
```

```
./install.csh.
```

This brings up the Install utility.



(LM Upgrade Installer)

Hit <Next> on the bottom of the screen to continue.

On the next few pages, you will be asked some questions. Here are examples of the answers you should give:

What is your existing rtda directory: /lamlm_bundle/rtda/YYYY.MM (path to old version)

What is your new rtda directory: : /lamlm_bundle/rtda/YYYY.MM (path to new version)

RLM_license: **Please leave blank as you will be using the new license.key licensing scheme**

<Next> to continue

Confirm directory creation of rtda: yes

<Next>

Preserve info by copying old directory? yes (default value)

<Next>

Complete installation? yes

<Next>

What kind of operating system do you have? (accept the default value)

Hit <Start>

Some files will be installed and copied. When the script finishes the installation, hit <Exit>.

Finishing up LM upgrade

Next, you will need to copy the old licmoninstall.csh to the new rtda directory, as the script doesn't do this for you.

```
cd lamlm_bundle
cp rtda.current_date/licmoninstall.csh rtda/licmoninstall.csh.
```

Also, manually copy in your lmstat executable from the old rtda directory.

i.e. cp .rtda.currentdate/linux/bin/lmstat rtda/linux/bin/